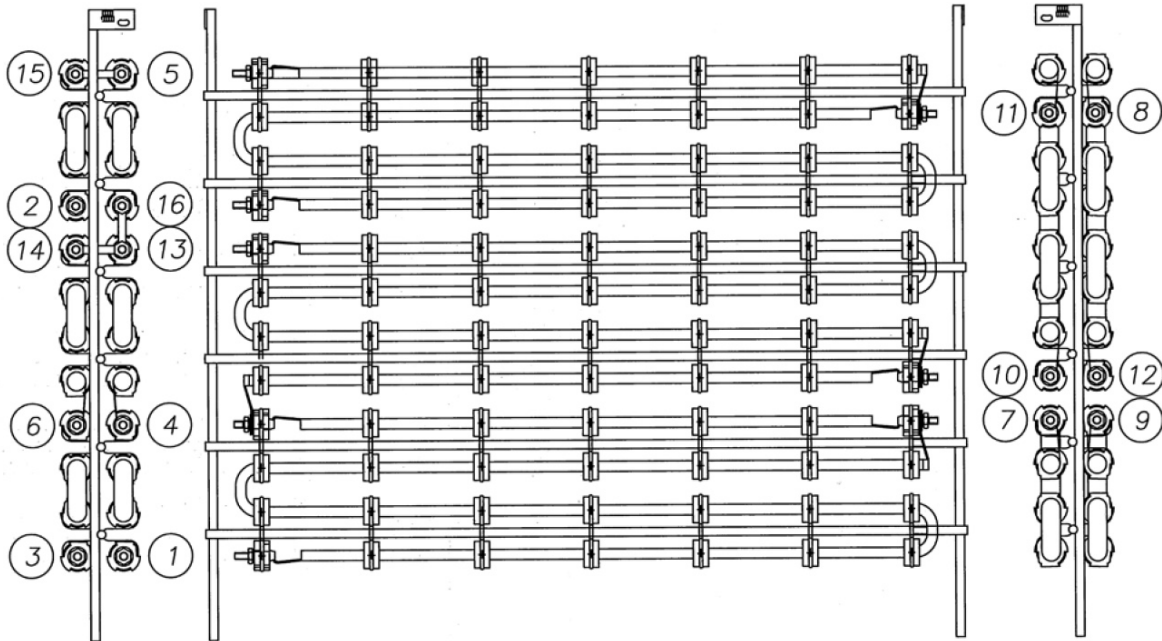


Standard Heater Connections



STANDARD HEATER CONNECTIONS	
VOLT-PHASE	208-1
LINE	7, 13
JUMPERS	7-8, 8-9
VOLT-PHASE	240-1
LINE	1, 13
JUMPERS	1-2, 2-3, 7-10, 8-11, 9-12
VOLT-PHASE	208-3
LINE	7, 8, 9
JUMPERS	1-2, 2-3, 7-10, 8-11, 9-12
VOLT-PHASE	240-3
LINE	4, 5, 6
JUMPERS	1-2, 2-3
VOLT-PHASE	380-3, 480-3, 600-3
LINE	1, 2, 3
JUMPERS	N/A
VOLT-PHASE	415-3
LINE	1, 2, 3
JUMPERS	7-10, 8-11, 9-12

