

### ◆ Protocol Manager™ Monitoring and Data Acquisition Software



Protocol Manager™ software enables communication and control between a personal computer and up to 32 Despatch ovens equipped with Protocol 3™ or Protocol Plus controllers. The user friendly software allows oven control, recipe download and data logging.

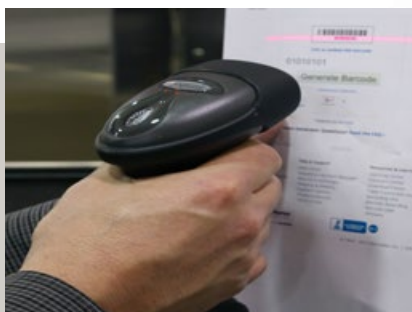
The software makes it easy to set up an oven network to access, operate and monitor multiple ovens from a single computer, which can be located up to 3000 feet away. The software displays key operating information and allows you to program time and temperature settings, including complex ramp and soak temperature profiles. You can set up a profile from the PC and then download that same profile to multiple controllers. You can also upload an existing profile from a particular controller to the central PC.

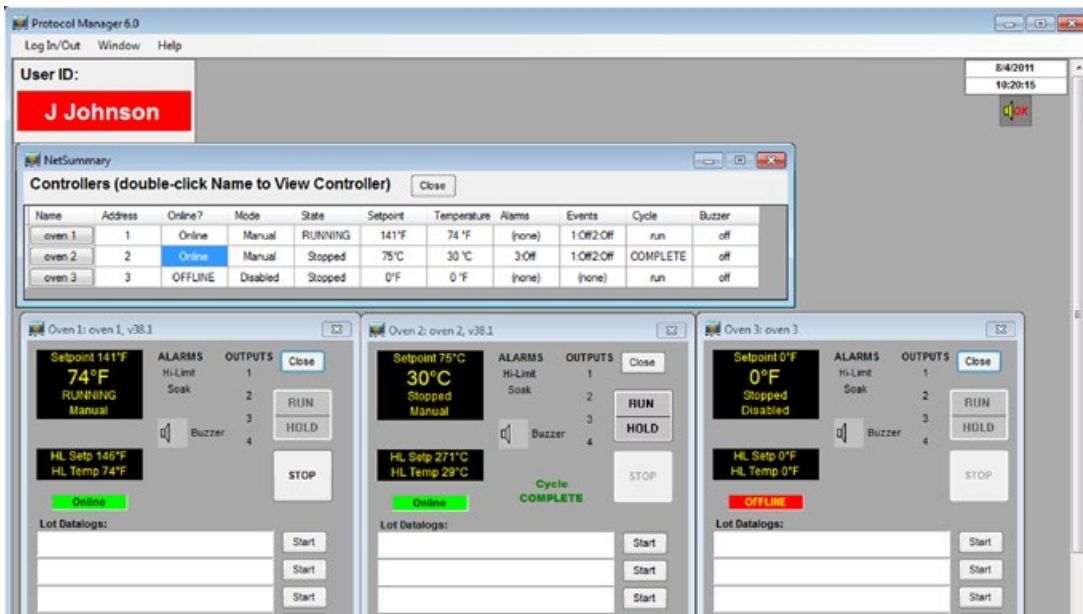
Protocol Manager™ records operating information, including times, temperatures, set points, alarm conditions, operators, and lot numbers on the PC ensuring process integrity throughout the equipment set. Data is written in an editable form that can be easily saved in an Excel format.

An optional barcode scanner that connects to your computer is available which can scan-in recipe parameters. Lot number and item number can be scanned-in with a second barcode.

#### FEATURES AT A GLANCE

- ◆ Quick and easy installation
- ◆ Control and monitoring of multiple ovens
- ◆ Programming of time and temperature settings, including complex ramp and soak temperature profiles
- ◆ Records operating information including: times, temperatures, set points, lot numbers and operators
- ◆ Password security (if desired)
- ◆ Optional barcode scanner



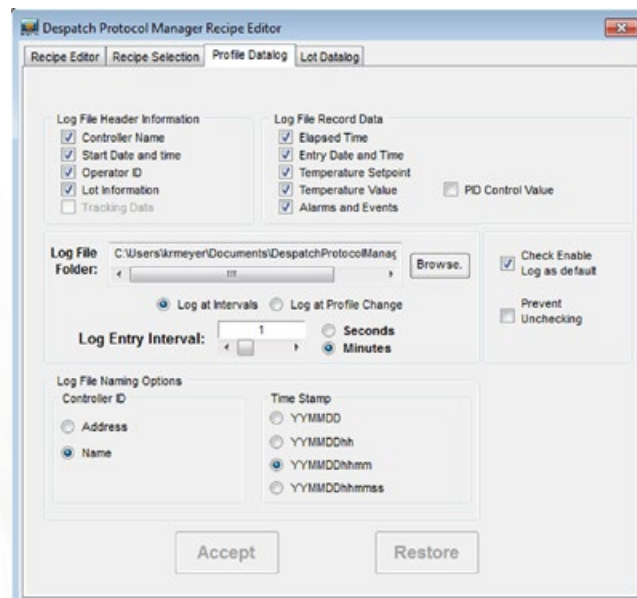
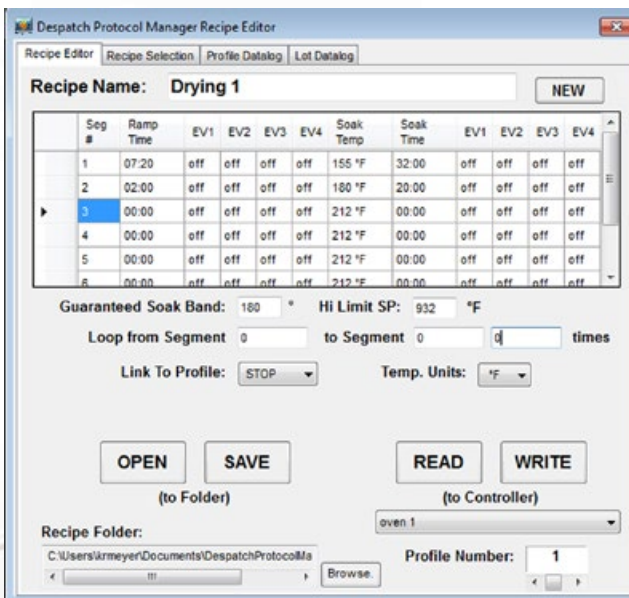


## SYSTEM REQUIREMENTS

- ◆ A computer with Windows XP, Vista or Windows 7 operating system
- ◆ Dispatch oven(s) equipped with Protocol Plus™ and Protocol 3™ firmware 2.0 and higher controllers and communications hardware

## OPERATES AND MONITORS MULTIPLE OVENS

Protocol Manager™ lets the operator start and stop multiple ovens from a personal computer, which could be located in a remote location. It also displays key operating information.



## PROGRAMS

Sets up time and temperature instructions, including complex "ramp and soak" temperature profiles. Saves time for the operators. Reduces operator errors.

## RECORDS DATA

Records operating information, including times, temperatures, set points, alarm conditions, operators, and lot numbers. Eliminates the need for a chart recorder and bulky paper records.

## SERVICE AND TECHNICAL SUPPORT

service parts: 1-800-473-7373  
 international service/main: 1-952-469-8230  
 service fax: 1-952-469-8193  
 service@despatch.com  
 usparts@itweae.com

## GLOBAL HEADQUARTERS

main phone: 1-800-726-0110  
 international/main: 1-952-469-5424  
 sales: 1-800-726-0550  
 international/sales: 1-952-469-8240  
 sales@despatch.com

## WWW.DESPATCH.COM

8860 207th Street West  
 Minneapolis, MN 55044 USA

**Despatch**  
 Thermal Processing Technology *ITW EAE*